



**North Middlesex RSD  
Ashby Public Schools  
Ashby, MA**

**School Year 2024-25 Enrollment Projection Report**

*Copyright, New England School Development Council, 2024*

# Table of Contents

Section	Page
Enrollment Summary.....	1
Historical Enrollment Table.....	2
Historical Enrollment Graph.....	3
Projected Enrollment Table.....	4
Projected Enrollment Graph.....	5
Historical & Projected Enrollment Graph.....	6
Historical & Projected Enrollment in Grade Combinations Line Graph.....	7
Historical & Projected Enrollment in Grade Combinations Stacked Column Graph.....	8
Birth to Kindergarten Relationship Graph.....	9
Additional Information .....	10
New England's PK-12 Enrollment Trends.....	11
Projection Methodology and Reliability .....	12

# Ashby, MA Enrollment Summary

NESDEC is pleased to send you this report displaying the past, present, and projected enrollments for your District. It is important to update enrollment projections every year to identify changes in enrollment patterns. Ten-year projections are designed to provide your District with yearly, up-to-date enrollment information that can be used by boards and administrators for effective planning and allocation of resources. We received the enrollment data from the District, and we assume that the method of collecting this data has been consistent from year to year.

Birth data informs Kindergarten enrollment. Each fall, NESDEC secures birth data from State sources, providing a snapshot in time as to actual and provisional births as reported by the State, and then uses this birth data to predict Kindergarten enrollments. We only use Fall birth data to assure consistency in reporting from year to year. Estimated births, which are an average of the previous five years of birth data, are based on this same snapshot. NESDEC acknowledges the variability of the provisional and the estimated birth data, and notes that the projected Kindergarten enrollments may serve as a guide to future planning.

Enrollment projections are more reliable in Years #1-3 in the future. Projections four to ten years out may serve as a guide to future enrollments and are useful for planning purposes. In light of this, NESDEC has added a "Spring Update Refresher" enrollment projection at no cost to affiliates. For more information, please refer to the Projection Methodology and Reliability section of this document.

The NESDEC enrollment projection fell within 18 students of the K-12 total, 389 students projected vs. 371 enrolled.

Births increased by 2 from a previous ten-year average of 24 to a projected average of 26. In most districts, Grades 1-8 are very stable in enrollments. However, there have been decreases in 3 of the 5 most recent years, leading to a net decrease averaging 1 student per year.

Over the next three years, Grades K-4 enrollments are projected to increase by 3 students, Grades 5-8 enrollments are projected to increase by 11 students, and Grades 9-12 enrollments are projected to decrease by 37 students, as students move through the grades.

Note: Lower grade level enrollments are less statistically reliable due to the small grade level cohort size.

# Historical Enrollment

School District: Ashby, MA

12/17/2024

Historical Enrollment By Grade																			
Birth Year	Births*	School Year	PK	K	1	2	3	4	5	6	7	8	9	10	11	12	UNGR	K-12	PK-12
2014	21	2019-20	9	29	27	31	29	30	33	39	42	34	16	23	14	17	< 10 **	365	374
2015	25	2020-21	4	30	23	27	30	27	30	32	36	42	20	18	25	16	0	356	360
2016	24	2021-22	10	24	38	29	26	32	30	32	33	45	42	22	14	21	0	388	398
2017	29	2022-23	15	25	30	38	32	28	35	33	31	31	30	41	22	15	< 10 **	392	407
2018	30	2023-24	12	34	25	30	39	32	26	30	27	31	24	27	43	20	< 10 **	389	401
2019	25	2024-25	7	28	37	29	28	40	31	23	28	25	17	22	27	36	< 10 **	372	379

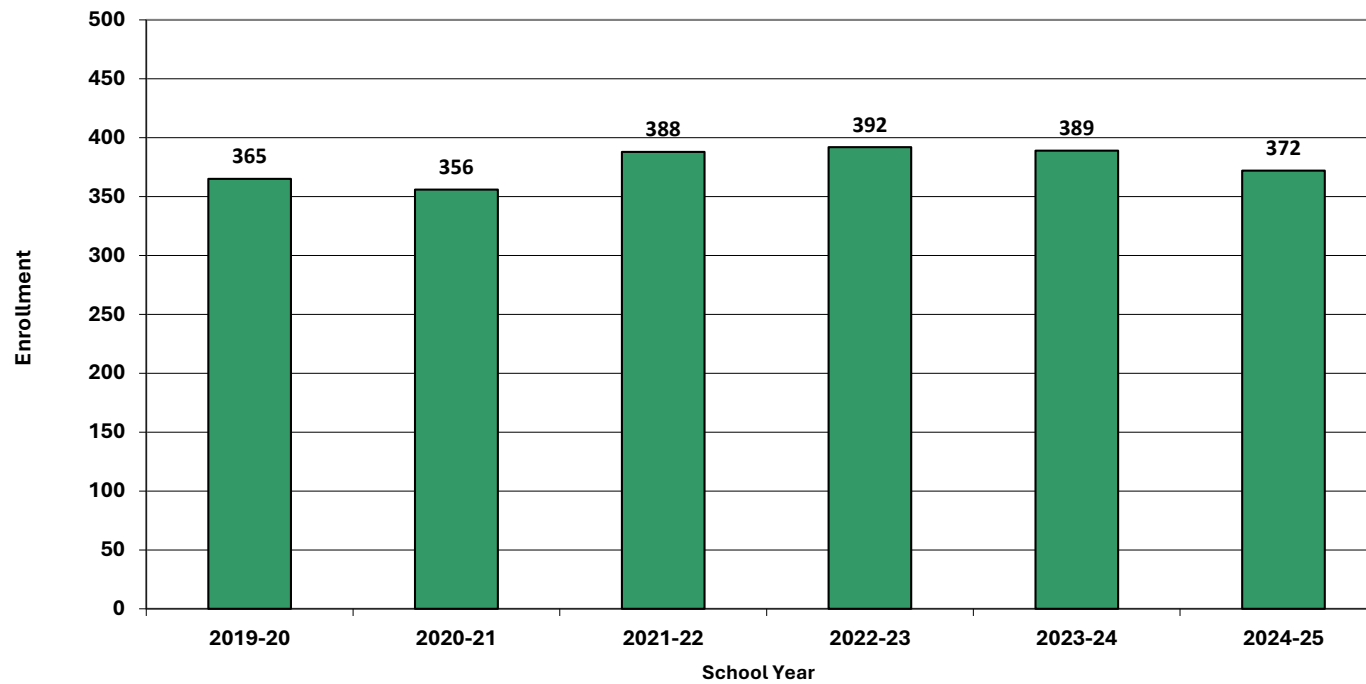
\*Birth data provided by Public Health Vital Records Departments in each state.

\*\* < 10 Not reported, to protect subgroups with fewer than 10 students.

Historical Enrollment in Grade Combinations									
School Year	PK-4	K-4	PK-K	1-4	K-8	PK-8	5-8	5-12	9-12
2019-20	155	146	38	117	294	303	148	218	70
2020-21	141	137	34	107	277	281	140	219	79
2021-22	159	149	34	125	289	299	140	239	99
2022-23	168	153	40	128	283	298	130	238	108
2023-24	172	160	46	126	274	286	114	228	114
2024-25	169	162	35	134	269	276	107	209	102

Historical Percentage Changes			
School Year	K-12	Diff.	%
2019-20	365		
2020-21	356	-9	-2.5%
2021-22	388	32	9.0%
2022-23	392	4	1.0%
2023-24	389	-3	-0.8%
2024-25	372	-17	-4.4%
Change	7		1.9%

## Grades K-12 Historical Enrollment



# Projected Enrollment

School District: Ashby, MA

12/17/2024

Note: Lower grade level enrollments are less statistically reliable due to the small grade level cohort size.

Enrollment Projections By Grade*																				
Birth Year	Births*		School Year	PK	K	1	2	3	4	5	6	7	8	9	10	11	12	UNGR	K-12	PK-12
2019	25		2024-25	7	28	37	29	28	40	31	23	28	25	17	22	27	36	< 10 **	372	379
2020	24		2025-26	7	25	30	37	30	29	40	29	21	27	18	16	22	25	< 10 **	350	357
2021	33		2026-27	7	34	27	30	38	31	29	38	26	21	19	17	16	21	< 10 **	348	355
2022	30		2027-28	8	31	37	27	31	39	31	27	35	25	15	18	17	15	< 10 **	349	357
2023	20	(prov.)	2028-29	8	21	33	37	28	32	39	29	25	34	18	14	18	16	< 10 **	345	353
2024	26	(est.)	2029-30	8	27	23	33	38	29	32	37	26	25	24	17	14	17	< 10 **	343	351
2025	27	(est.)	2030-31	8	28	29	23	34	39	29	30	34	25	18	23	17	13	< 10 **	343	351
2026	27	(est.)	2031-32	9	28	30	29	23	35	39	27	27	33	18	17	23	16	< 10 **	346	355
2027	26	(est.)	2032-33	9	27	30	30	30	24	35	37	25	26	23	17	17	22	< 10 **	344	353
2028	25	(est.)	2033-34	10	26	29	30	31	31	24	33	34	25	18	22	17	16	< 10 **	337	347
2029	26	(est.)	2034-35	10	27	28	29	31	32	31	23	30	33	18	17	22	16	< 10 **	338	348

Note: Ungraded students (UNGR) often are high school students whose anticipated years of graduation are unknown, or students with special needs - UNGR not included in Grade Combinations for 7-12, 9-12, etc.

Based on an estimate of births

Based on children already born

Based on students already enrolled

\*Birth data provided by Public Health Vital Records Departments in each state.

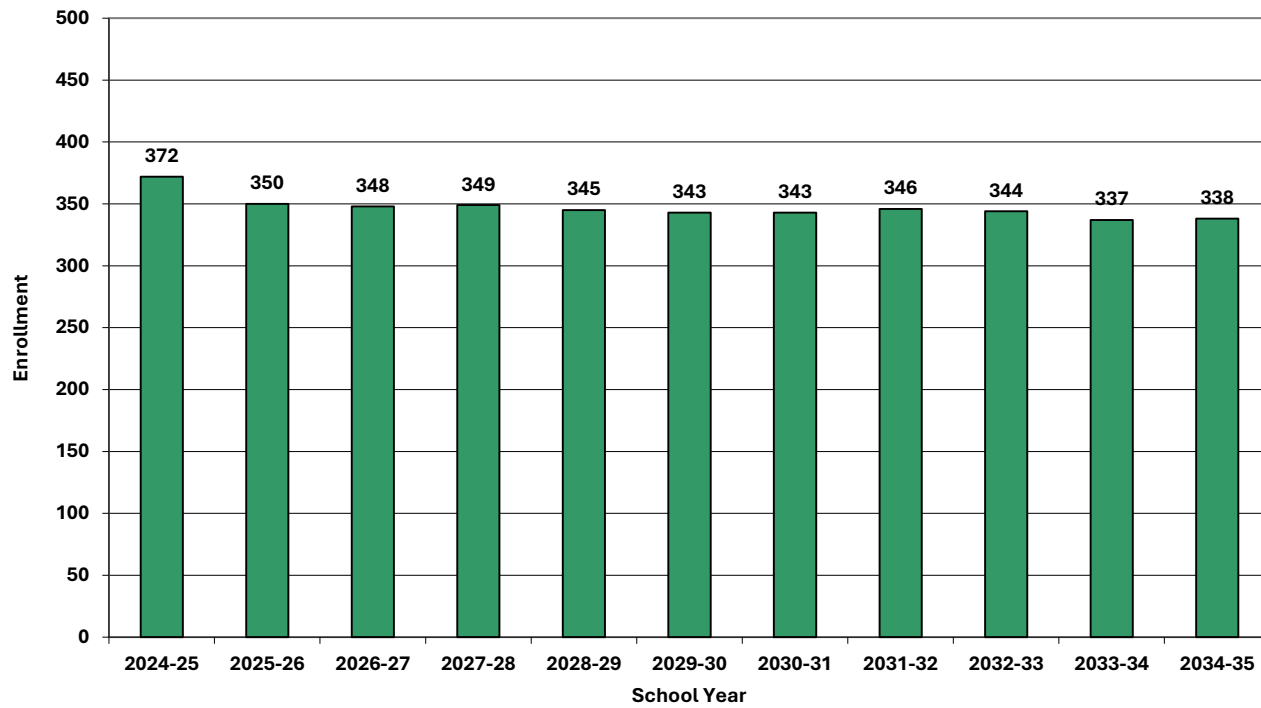
\*\* < 10 Not reported, to protect subgroups with fewer than 10 students.

Projected Enrollment in Grade Combinations*									
School Year	PK-4	K-4	PK-K	1-4	K-8	PK-8	5-8	5-12	9-12
2024-25	169	162	35	134	269	276	107	209	102
2025-26	158	151	32	126	268	275	117	198	81
2026-27	167	160	41	126	274	281	114	187	73
2027-28	173	165	39	134	283	291	118	183	65
2028-29	159	151	29	130	278	286	127	193	66
2029-30	158	150	35	123	270	278	120	192	72
2030-31	161	153	36	125	271	279	118	189	71
2031-32	154	145	37	117	271	280	126	200	74
2032-33	150	141	36	114	264	273	123	202	79
2033-34	157	147	36	121	263	273	116	189	73
2034-35	157	147	37	120	264	274	117	190	73

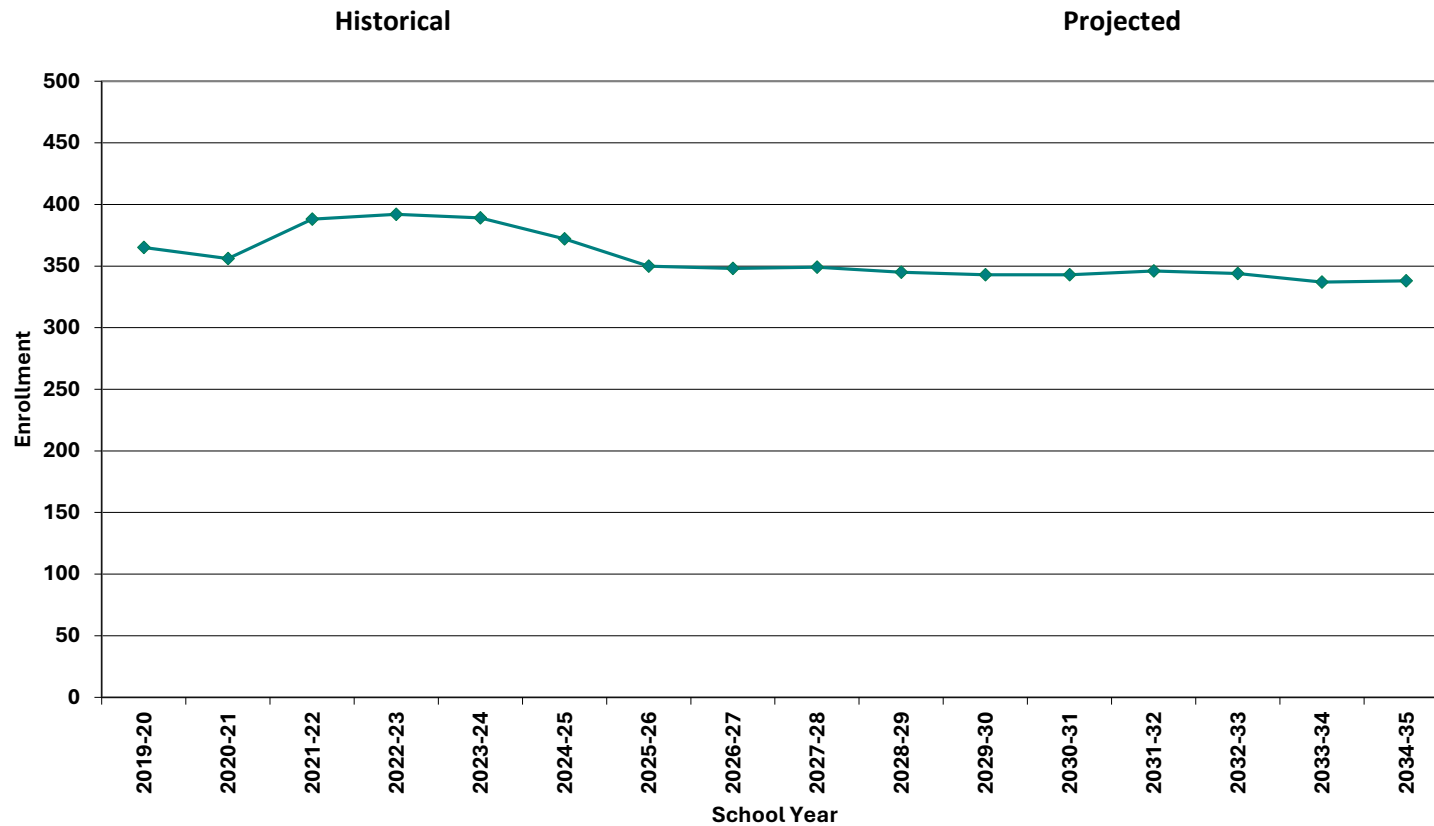
Projected Percentage Changes			
School Year	K-12	Diff.	%
2024-25	372		
2025-26	350	-22	-5.9%
2026-27	348	-2	-0.6%
2027-28	349	1	0.3%
2028-29	345	-4	-1.1%
2029-30	343	-2	-0.6%
2030-31	343	0	0.0%
2031-32	346	3	0.9%
2032-33	344	-2	-0.6%
2033-34	337	-7	-2.0%
2034-35	338	1	0.3%
Change	-34		-9.1%

\*Projections should be updated annually to reflect changes in in/out-migration of families, real estate sales, residential construction, births, and similar factors.

## Grades K-12 Projected Enrollment



# Grades K-12 Historical & Projected Enrollment

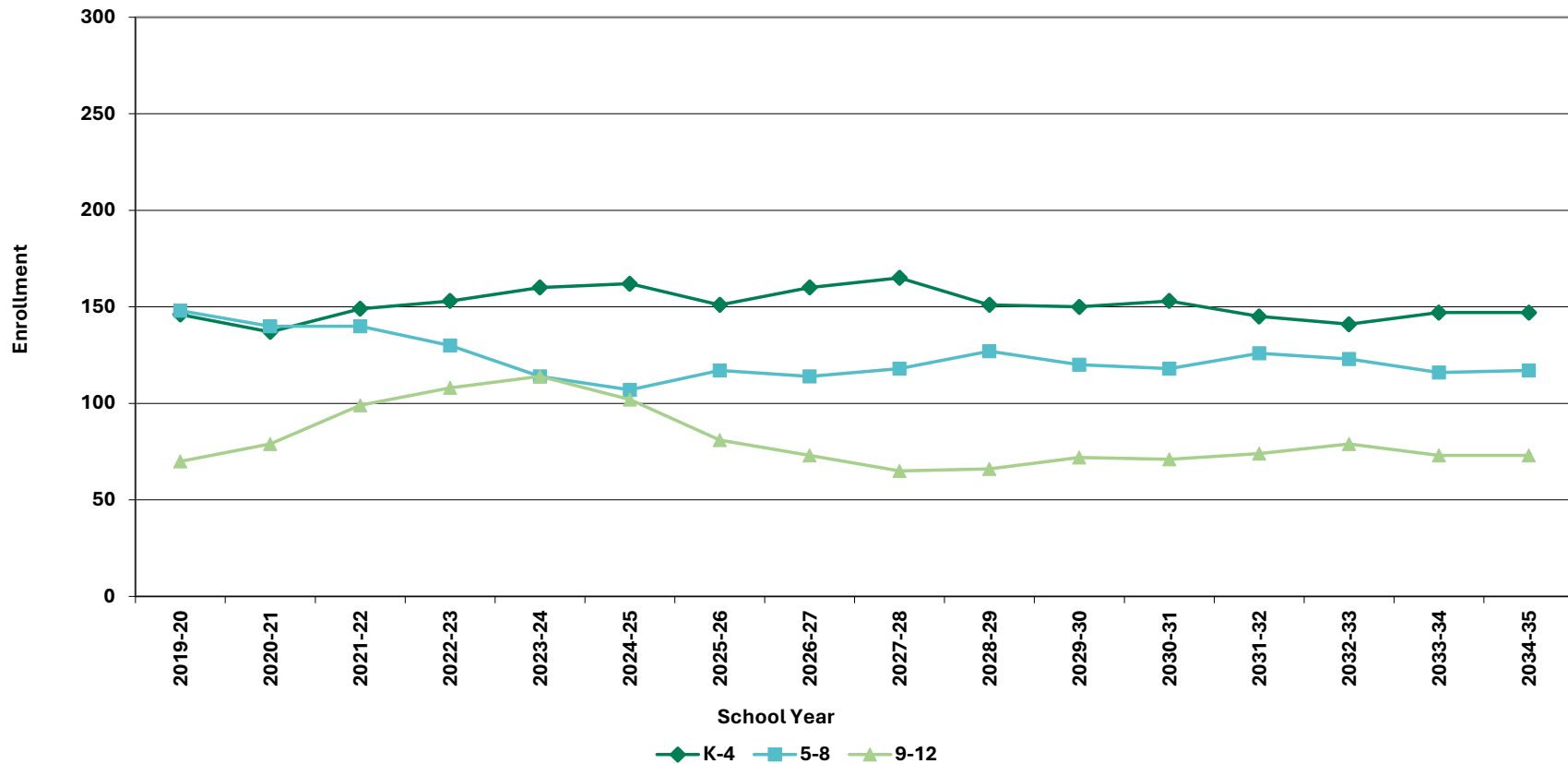




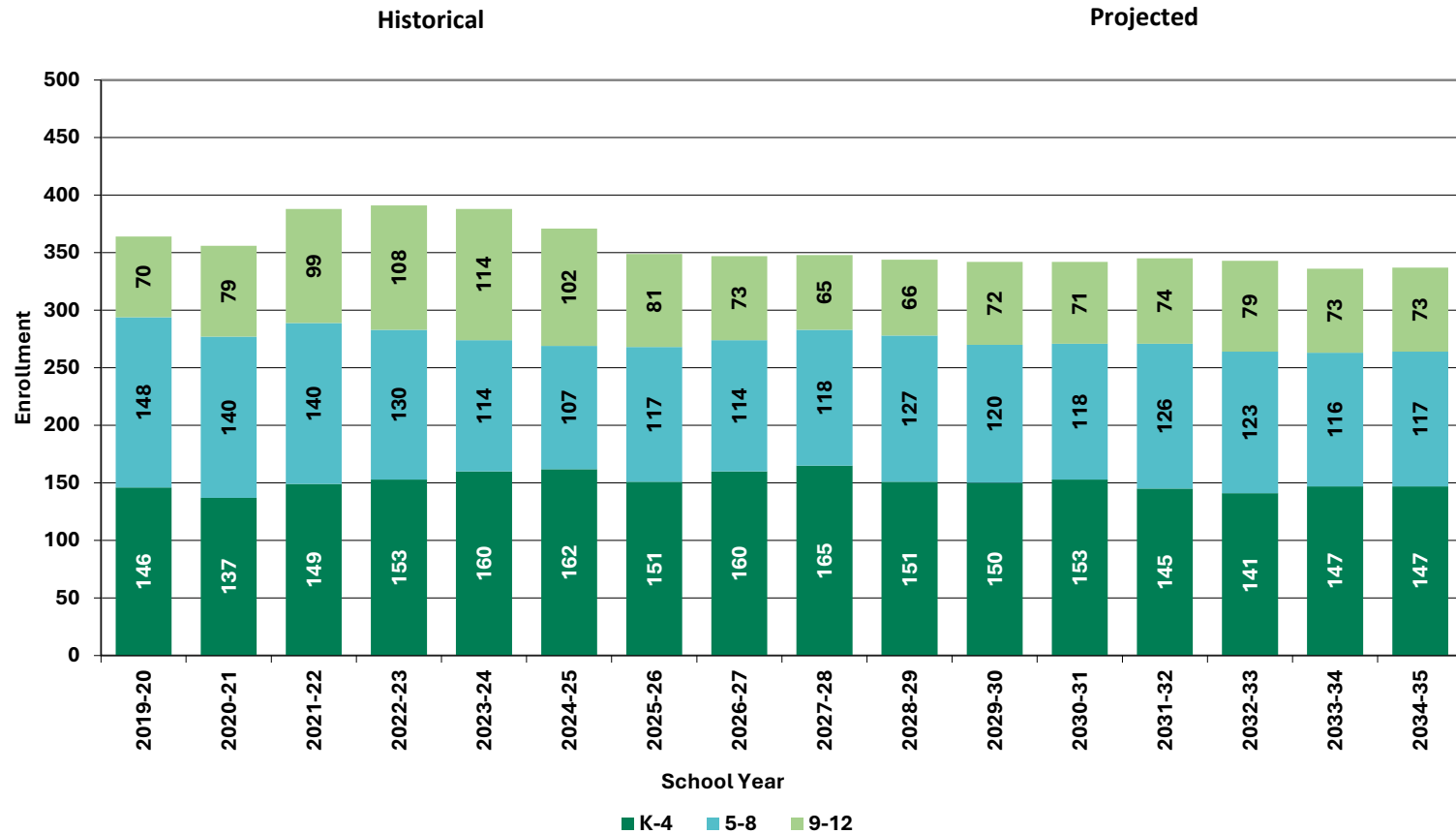
# Historical & Projected Enrollments in Grade Combinations

Historical

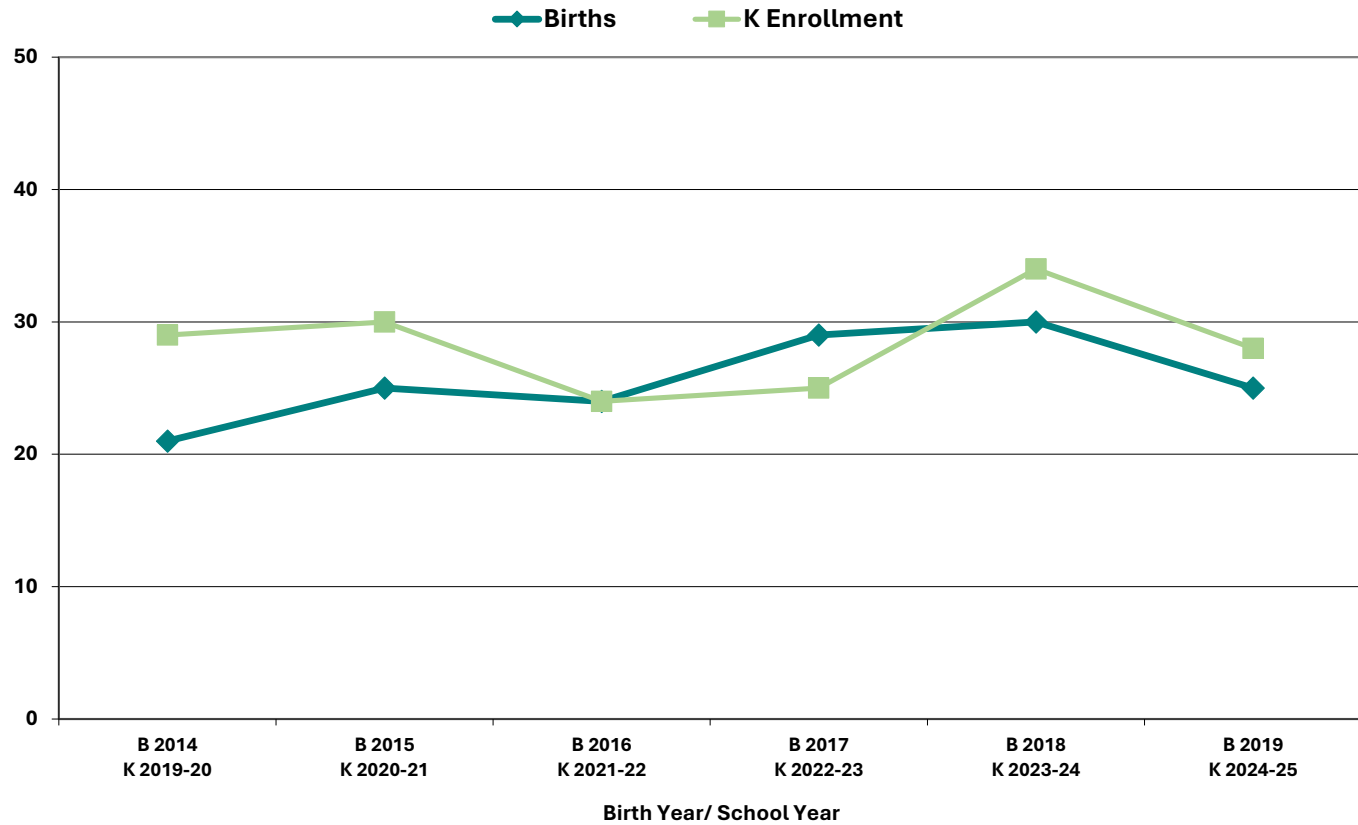
Projected



# Historical & Projected Enrollments in Grade Combinations



# **Birth-to-Kindergarten Relationship**



## Additional Information

School Year	9-12 CTE	K-12 Non-Public	K-12 Choice-In	K-12 Choice-Out	K-12 Out District SPED	K-12 Homeschool
2020-21	n/a	n/a	n/a	n/a	n/a	n/a
2021-22	n/a	n/a	n/a	n/a	n/a	n/a
2022-23	n/a	n/a	n/a	n/a	n/a	n/a
2023-24	0	0	0	0	0	0
2024-25	32	19	< 10 **	25	< 10 **	33

\* Data provided by District.

"n/a" signifies that information was not provided by District.

\*\* < 10 Not reported, to protect subgroups with fewer than 10 students.

Building Permits Issued		
Year	Single-Family	Multi-Units
2020	13	0
2021	6	0
2022	6	0
2023	5	0
2024	2 to date	0 to date

\*Building permit data from HUD.

## New England's PK-12 Enrollments Trends

From 2022 to 2031, the US Department of Education anticipates changes in PK-12 enrollment of -1.8% in the South, -9.7% in the West, -5.0% in the Midwest, -9.1% in the Northeast, and a total of -5.5% nationwide.

State	Fall 2022 PK - 12	Fall 2031 Projected	PK-12 Decline	% Change 2022-2031
USA	49,618,464	46,889,600	-2,728,864	-5.5%
CT	513,513	465,200	-48,313	-9.4%
ME	173,853	162,900	-10,953	-6.3%
MA	923,349	857,100	-66,249	-7.2%
NH	168,909	156,600	-12,309	-7.3%
RI	137,449	127,900	-9,549	-6.9%
VT	83,654	77,300	-6,354	-7.6%

**Source:** U.S. Department of Education, National Center for Education Statistics, Enrollment in public elementary and secondary schools, by region, state, and jurisdiction: Selected years, fall 1990 through fall 2031, Table 203.20, Report Generated Dec. 2023, NESDEC 2.8.24

Although most New England Districts are seeing a decline in the number of births, NESDEC's experience indicates that the impact on enrollment varies from District to District. Almost half of New England Districts have been growing in PK-12 enrollment, and a similar number are declining (often in rural areas), with the other Districts remaining stable.

# Projection Methodology and Reliability

## PROJECTION METHODOLOGY

Cohort component (survival) technique is a frequently used method of preparing enrollment forecasts. NESDEC uses this method, but modifies it in order to move away from forecasts that are wholly computer- or formula-driven. Such modification permits the incorporation of important, current district-specific demographic information into the generation of enrollment forecasts (such as in/out-migration of students, resident births, HUD-reported building permits, etc.). Percentages are calculated from the historical enrollment data to determine a reliable percentage of increase or decrease in enrollment between any two grades. For example, if 100 students enrolled in Grade 1 in 2023-24 increased to 104 students in Grade 2 in 2024-25, the percentage of survival would be 104%, or a ratio of 1.04. Ratios are calculated between each pair of grades or years in school over several recent years.

After study and analysis of the historical ratios, and based upon a reasonable set of assumptions regarding births, migration rates, retention rates, etc., ratios most indicative of future growth patterns are determined for each pair of grades. The ratios thus selected are applied to the present enrollment statistics to project into future years. The ratios are the key factors in the reliability of the projections, assuming validity of the data at the starting point.

## RELIABILITY OF ENROLLMENT PROJECTIONS

Projections can serve as useful guides to school administrators for educational planning. Enrollment projections are more reliable in Years #1-3 in the future and less reliable in the “out-years.” Projections four to ten years out may serve as a guide to future enrollments and are useful for planning purposes, but they should be viewed as subject to change given the likelihood of potential shifts in underlying assumptions/trends, such as student migration, births as they relate to Kindergarten enrollment, and other factors.

Projections that are based upon **the children who already are in the district** (the current K-12 population only) will be the most reliable. The second level of reliability will be for those children already **born into the community but not yet old enough to be in school**. The least reliable category is the group for which an estimate must be made **to predict the number of births**, thereby adding additional uncertainty. See these three multi-colored groupings on the “Projected Enrollment” tab.

Annual updates allow for early identification of recent changes in historical trends. When the actual enrollment in a grade is significantly different (higher or lower) from the projected number, it is important (yet difficult) to determine whether this is a one-year aberration or whether a new trend may have begun. **In light of this possibility, NESDEC urges all school districts to have updated enrollment forecasts developed by NESDEC each October.** This service is available at no cost to affiliated school districts.